

West Bridge Street Reconstruction



Owatonna
Minnesota

ISG

TRAFFIC PATTERNS

Traffic patterns for a construction project on West Bridge Street will change starting Tuesday, July 6. Weather permitting, the intersection at W Bridge Street and Park Drive will be closed. Both directions of traffic on W Bridge Street between Park Drive and the Southbound I-35 ramps will remain closed at this time. Traffic will be routed around the work area via I-35 and Hoffman Road. The I-35 ramp intersection will remain open to traffic at this time. The Park Drive intersection is anticipated to be re-opened to traffic within 30 days, during this time access to Fleet Farm will be available via the west entrance.

CONSTRUCTION SCHEDULE

Construction on West Bridge Street is anticipated to continue throughout the summer with traffic control changes occurring as work progresses. All work will be substantially complete no later than October 30th, 2021. All dates are subject to change due to weather or other factors. The City of Owatonna advises motorists to drive with caution and slow down through work zones for their safety and for the safety of the construction crews.



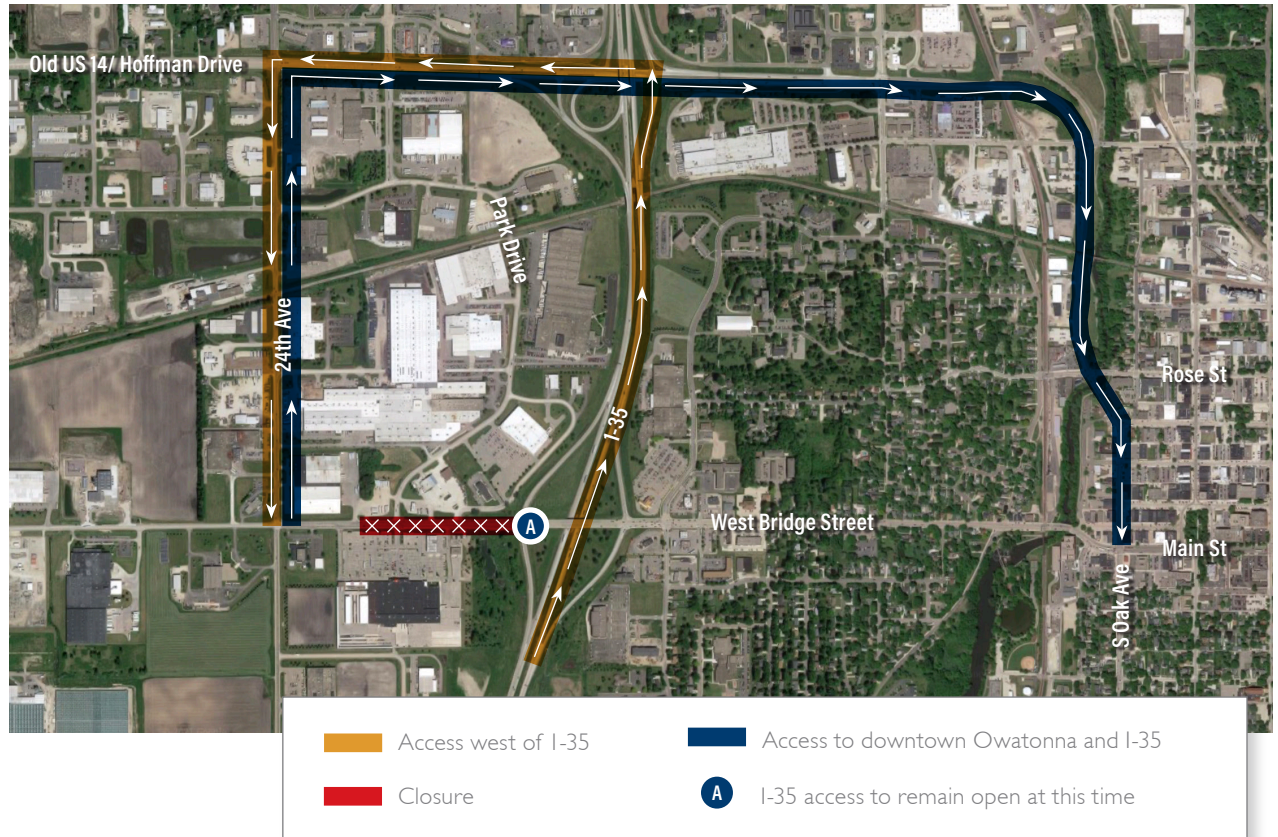
For updates on this project, visit:

bit.ly/Owatonna_BridgeStreet

Things to Keep in Mind:

During construction, access may be limited. To help ensure a timely construction process, please follow all construction updates and be sure to:

- Follow detour signage
- Keep out of construction areas
- Drive slowly through work areas and pay attention to traffic control changes throughout the project



QUESTIONS?

If you have any mobility concerns that require special accessibility requirements to driveways or walkways during construction please contact:



Anthony Lance
Construction Administrator
Anthony.Lance@ISGInc.com
651.764.9244



Reese Sudtelgte
Civil Engineer
Reese.Sudtelgte@ISGInc.com
952.426.0699

Available Monday
through Friday,
9:00 a.m. to 5:00 p.m.

July 2, 2021

MEDIA RELEASE

For Immediate Release

For more information contact:

Reese Sudtelgte

952-426-0699

reese.sudtelgte@isginc.com

WEST BRIDGE STREET CONSTRUCTION TRAFFIC CHANGES

Owatonna, Minn. – Traffic patterns for a construction project on West Bridge Street will change starting Tuesday, July 6, 2021. Weather permitting, the intersection of W Bridge Street and Park Drive will be closed. Both directions of traffic on West Bridge Street between Park Drive and the Southbound I-35 ramps will remain closed and traffic will continue to be routed around the work area via I-35 and Hoffman Road. The I-35 ramp intersection will remain open to traffic at this time. The Park Drive intersection is anticipated to be re-opened to traffic within 30 days, during this time access to Fleet Farm will be available via the west entrance.

Construction on West Bridge Street is anticipated to continue throughout the summer with traffic control changes occurring as work progresses. All work will be substantially complete no later than October 30th, 2021.

All dates are subject to change due to weather or other factors. The City of Owatonna advises motorists to drive with caution and slow down through work zones for their safety and for the safety of the construction crews.

For updates on this or other City of Owatonna construction projects, visit:

<https://www.ci.owatonna.mn.us/728/2021-Bridge-Street-Project>

###