

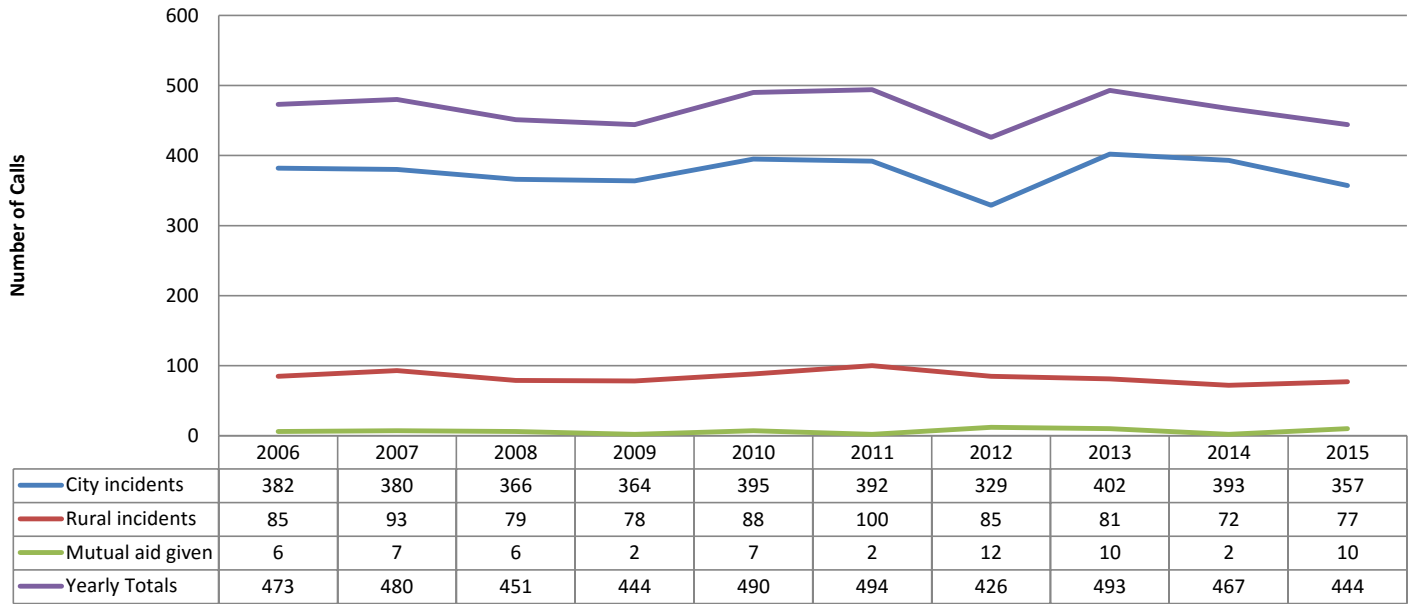
## Owatonna Fire Department Incident Type Report

Incident Type	2005	2006	2007	2008	2009	2010	2011	2012	2013	2014	2015	Total
<b>1 Fire</b>												
100 Fire, Other	2	1	1	2	1	0	1	0	0	2	1	11
111 Building fire	28	30	28	14	17	20	19	23	31	23	18	251
112 Fires in structure other than in a building	2	2	2	1	3	1	0	0	0	0	0	11
113 Cooking fire, confined to container	10	11	12	6	10	11	6	9	6	8	6	95
114 Chimney or flue fire, confined to chimney or flue	0	0	1	2	2	0	0	1	0	1	0	7
116 Fuel burner/boiler malfunction, fire confined	0	0	1	0	0	1	0	0	1	0	1	4
118 Trash or rubbish fire, contained	0	0	0	2	2	1	1	0	1	0	1	8
121 Fire in mobile home used as fixed residence	0	1	0	0	0	0	0	0	0	0	1	2
130 Mobile property (vehicle) fire, Other	0	0	1	1	0	1	0	1	1	0	1	6
131 Passenger vehicle fire	19	16	11	15	8	11	12	6	9	11	6	124
132 Road freight or transport vehicle fire	1	3	3	2	3	2	3	0	3	3	1	24
133 Rail vehicle fire	0	0	1	0	0	0	0	0	0	0	0	1
134 Water vehicle fire	0	0	0	0	0	0	1	0	0	0	0	1
135 Aircraft fire	0	0	0	0	0	0	1	0	0	0	0	1
136 Self-propelled motor home or recreational vehicle	0	0	0	0	0	1	0	0	0	0	0	1
137 Camper or recreational vehicle (RV) fire	0	0	0	0	0	1	0	0	0	0	0	1
138 Off-road vehicle or heavy equipment fire	2	2	0	0	2	0	0	1	2	2	2	13
140 Natural vegetation fire, Other	0	2	0	2	0	0	5	2	1	2	2	16
141 Forest, woods or wildland fire	3	0	1	0	1	0	1	2	0	1	0	9
142 Brush or brush-and-grass mixture fire	5	2	2	4	4	6	8	9	3	1	5	49
143 Grass fire	5	4	5	4	9	5	3	11	2	3	2	53
150 Outside rubbish fire, Other	0	0	0	1	0	2	1	3	0	0	1	8
151 Outside rubbish , trash or waste fire	3	7	7	2	2	0	3	2	1	3	5	35
154 Dumpster or other outside trash receptacle	2	1	5	5	2	6	2	3	4	0	4	34
160 Special outside fire, Other	2	1	1	2	1	0	1	0	0	1	1	10
161 Outside storage fire	0	2	0	0	1	0	0	1	0	0	0	4
162 Outside equipment fire	1	1	1	1	3	2	2	1	2	2	2	18
170 Cultivated vegetation, crop fire, Other	0	0	1	1	0	0	1	0	0	0	0	3
171 Cultivated grain or crop fire	0	0	0	1	0	1	4	3	0	0	0	9
173 Cultivated trees or nursery stock fire	0	0	0	0	0	0	0	0	1	0	0	1
<b>Subtotal</b>	<b>85</b>	<b>86</b>	<b>84</b>	<b>68</b>	<b>71</b>	<b>72</b>	<b>75</b>	<b>78</b>	<b>68</b>	<b>63</b>	<b>60</b>	<b>810</b>
<b>2 Rupture, Explosion, Overheat (no fire)</b>	<b>2005</b>	<b>2006</b>	<b>2007</b>	<b>2008</b>	<b>2009</b>	<b>2010</b>	<b>2011</b>	<b>2012</b>	<b>2013</b>	<b>2014</b>	<b>2015</b>	
200 Overpressure rupture, explosion, overheat other	1	0	0	0	0	0	0	0	0	0	0	1
220 Overpressure rupture from air or gas, Other	0	1	0	1	0	0	0	0	0	0	0	2
221 Overpressure rupture of air or gas pipe/pipeline	5	2	2	2	0	0	0	0	0	1	0	12
223 Air or gas rupture of pressure or process vessel	0	0	0	1	0	0	0	0	0	0	0	1
243 Fireworks explosion (no fire)	1	0	0	0	0	0	0	0	0	0	0	1
251 Excessive heat, scorch burns with no ignition	1	1	2	1	2	0	1	0	0	0	0	8
<b>Subtotal</b>	<b>8</b>	<b>4</b>	<b>4</b>	<b>5</b>	<b>2</b>	<b>0</b>	<b>1</b>	<b>0</b>	<b>0</b>	<b>1</b>	<b>0</b>	<b>25</b>
<b>3 Rescue &amp; Emergency Medical Service</b>	<b>2005</b>	<b>2006</b>	<b>2007</b>	<b>2008</b>	<b>2009</b>	<b>2010</b>	<b>2011</b>	<b>2012</b>	<b>2013</b>	<b>2014</b>	<b>2015</b>	
300 Rescue, EMS incident, other	7	3	2	3	0	2	0	0	0	1	0	18
311 Medical assist, assist EMS crew	29	37	55	33	29	17	11	11	13	15	17	267
321 EMS call, excluding vehicle accident with injury	0	0	0	1	1	0	1	0	0	1	0	4
322 Motor vehicle accident with injuries	6	13	19	15	36	48	58	40	34	50	56	375
323 Motor vehicle/pedestrian accident (MV Ped)	0	1	0	0	2	4	3	3	2	1	0	16
324 Motor Vehicle Accident with no injuries	5	2	4	10	11	8	6	9	16	20	15	106
331 Lock-in (if lock out, use 511)	0	0	1	1	0	0	3	1	0	0	1	7
341 Search for person on land	3	1	2	0	0	1	0	2	0	0	0	9
342 Search for person in water	0	1	0	0	1	0	1	0	0	0	0	3
350 Extrication, rescue, Other	0	0	1	0	1	1	0	1	1	0	0	5
351 Extrication of victim(s) from building/structure	0	1	0	0	0	0	0	0	0	2	0	3
352 Extrication of victim(s) from vehicle	21	17	13	13	6	8	2	4	2	7	4	97
353 Removal of victim(s) from stalled elevator	1	1	0	0	1	2	3	0	3	2	2	15
354 Trench/below-grade rescue	0	0	0	0	0	0	0	3	0	0	0	3
355 Confined space rescue	0	0	0	0	0	1	0	0	0	0	0	1
356 High-angle rescue	0	0	1	1	0	0	0	0	0	0	0	2
357 Extrication of victim(s) from machinery	2	0	1	0	1	0	0	0	0	0	1	5
360 Water & ice-related rescue, other	0	0	1	1	0	0	1	0	0	0	0	3
363 Swift water rescue	1	0	0	0	0	3	1	0	1	0	0	6
365 Watercraft rescue											1	1
371 Electrocution or potential electrocution	1	1	0	0	0	0	0	0	0	0	1	3
381 Rescue or EMS standby	7	6	7	4	4	1	3	6	2	1	1	42
<b>Subtotal</b>	<b>83</b>	<b>84</b>	<b>107</b>	<b>82</b>	<b>93</b>	<b>96</b>	<b>93</b>	<b>80</b>	<b>74</b>	<b>100</b>	<b>99</b>	<b>991</b>

Incident Type	2005	2006	2007	2008	2009	2010	2011	2012	2013	2014	2015	Total
<b>4 Hazardous Condition (No Fire)</b>	<b>2005</b>	<b>2006</b>	<b>2007</b>	<b>2008</b>	<b>2009</b>	<b>2010</b>	<b>2011</b>	<b>2012</b>	<b>2013</b>	<b>2014</b>	<b>2015</b>	
400 Hazardous condition, other	4	2	2	0	2	0	0	1	0	0	3	14
410 Combustible/flammable gas/liquid condition, other	1	1	2	0	0	0	1	0	0	0	0	5
411 Gasoline or other flammable liquid spill	8	9	5	6	5	5	7	2	9	5	5	66
412 Gas leak (natural gas or LPG)	14	11	14	15	13	18	21	17	22	17	13	175
413 Oil or other combustible liquid spill	3	5	1	3	4	0	2	5	3	5	0	31
421 Chemical hazard (no spill or leak)	1	0	0	1	0	0	0	0	0	0	1	3
422 Chemical spill or leak	0	2	1	1	0	1	1	1	1	3	1	12
423 Refrigeration leak	0	0	0	0	1	0	0	0	0	0	0	1
424 Carbon monoxide incident	6	7	7	16	18	21	23	13	21	20	20	172
440 Electrical wiring/equipment problem, Other	0	0	1	0	0	0	2	1	0	0	0	4
441 Heat from short circuit (wiring), defective/worn	0	0	1	0	1	1	0	0	1	1	1	6
442 Overheated motor	1	0	0	0	1	0	1	0	1	0	0	4
444 Power line down	0	3	1	3	1	2	1	2	7	1	2	23
445 Arcing, shorted electrical equipment	3	3	6	2	0	4	1	6	7	6	1	39
460 Accident, potential accident, Other	0	1	0	1	0	0	0	0	0	0	0	2
461 Building or structure weakened or collapsed	0	0	1	0	0	0	0	0	0	0	0	1
463 Vehicle accident, general cleanup	4	3	0	3	3	0	2	0	1	1	1	18
471 Explosive, bomb removal	0	0	0	0	0	1	0	0	0	0	0	1
<b>Subtotal</b>	<b>45</b>	<b>47</b>	<b>42</b>	<b>51</b>	<b>49</b>	<b>53</b>	<b>62</b>	<b>48</b>	<b>73</b>	<b>59</b>	<b>48</b>	<b>577</b>
<b>5 Service Call</b>	<b>2005</b>	<b>2006</b>	<b>2007</b>	<b>2008</b>	<b>2009</b>	<b>2010</b>	<b>2011</b>	<b>2012</b>	<b>2013</b>	<b>2014</b>	<b>2015</b>	
500 Service Call, other	9	4	2	2	2	1	4	2	3	5	0	34
510 Person in distress, other	1	1	1	0	0	0	0	0	0	0	2	5
511 Lock-out	0	0	0	0	3	1	1	1	0	0	0	6
520 Water problem, Other	0	3	2	1	0	0	2	0	2	0	1	11
521 Water evacuation	1	5	2	2	1	2	4	2	5	3	2	29
522 Water or steam leak	0	0	1	3	0	0	0	0	2	1	0	7
531 Smoke or odor removal	16	21	15	15	14	16	12	20	15	13	23	180
541 Animal problem	0	2	0	0	0	0	0	0	0	0	1	3
542 Animal rescue	1	0	0	0	0	1	3	0	1	0	0	6
550 Public service assistance, Other	0	0	0	1	1	7	0	1	0	1	1	12
551 Assist police or other governmental agency	12	12	8	7	6	6	8	10	9	6	6	90
552 Police matter	1	1	3	2	2	1	2	4	2	3	5	26
553 Public service	1	2	3	0	1	1	5	4	1	3	5	26
555 Defective elevator, no occupants	0	0	0	0	0	1	0	0	0	0	0	1
561 Unauthorized burning	8	10	6	2	6	11	6	3	2	4	1	59
571 Cover assignment, standby, moveup	3	3	2	4	1	0	0	7	2	2	1	25
<b>Subtotal</b>	<b>53</b>	<b>64</b>	<b>45</b>	<b>39</b>	<b>37</b>	<b>48</b>	<b>47</b>	<b>54</b>	<b>44</b>	<b>41</b>	<b>48</b>	<b>520</b>
<b>6 Good Intent Call</b>	<b>2005</b>	<b>2006</b>	<b>2007</b>	<b>2008</b>	<b>2009</b>	<b>2010</b>	<b>2011</b>	<b>2012</b>	<b>2013</b>	<b>2014</b>	<b>2015</b>	
600 Good intent call, Other	15	14	13	13	11	17	10	8	10	6	0	117
611 Dispatched & cancelled en route	30	23	15	24	34	25	37	26	31	26	41	312
621 Wrong location	0	2	1	1	0	2	0	0	0	0	0	6
622 No Incident found on arrival at dispatch address	6	4	1	3	6	15	3	7	15	14	11	85
631 Authorized controlled burning	5	5	4	5	8	7	6	8	5	2	1	56
632 Prescribed fire	0	1	1	1	0	1	0	0	0	0	0	4
641 Vicinity alarm (incident in other location)	0	0	0	0	0	0	0	0	2	0	1	3
650 Steam, Other gas mistaken for smoke, Other	1	0	1	1	0	0	0	1	0	1	0	5
651 Smoke scare, odor of smoke	2	2	2	1	4	6	3	3	2	4	3	32
652 Steam, vapor, fog or dust thought to be smoke	4	5	2	5	3	2	5	4	3	5	0	38
653 Smoke from barbecue, tar kettle	0	2	1	0	0	0	0	0	0	0	0	3
661 EMS call, party transported by non-fire agency	0	0	1	0	0	0	0	0	0	0	1	2
671 HazMat release investigation w/no HazMat	1	3	2	1	3	4	5	3	6	2	1	31
<b>Subtotal</b>	<b>64</b>	<b>61</b>	<b>44</b>	<b>55</b>	<b>69</b>	<b>79</b>	<b>69</b>	<b>60</b>	<b>74</b>	<b>60</b>	<b>59</b>	<b>694</b>

Incident Type	2005	2006	2007	2008	2009	2010	2011	2012	2013	2014	2015	Total
<b>7 False Alarm &amp; False Call</b>	<b>2005</b>	<b>2006</b>	<b>2007</b>	<b>2008</b>	<b>2009</b>	<b>2010</b>	<b>2011</b>	<b>2012</b>	<b>2013</b>	<b>2014</b>	<b>2015</b>	
700 False alarm or false call, Other	4	2	7	2	2	1	0	1	0	1	1	21
710 Malicious, mischievous false call, other	2	5	2	6	2	3	0	2	6	0	2	30
711 Municipal alarm system, malicious false alarm	1	0	1	0	0	0	0	0	1	0	0	3
712 Direct tie to FD, malicious false alarm	0	0	0	0	0	0	0	0	0	1	0	1
713 Telephone, malicious false alarm	0	0	0	0	0	0	1	0	0	0	0	1
714 Central station, malicious false alarm	2	1	4	3	3	1	8	1	5	5	5	38
715 Local alarm system, malicious false alarm	0	4	0	2	1	1	0	0	0	0	0	8
721 Bomb scare - no bomb	0	3	4	1	0	0	0	1	0	0	0	9
730 System malfunction, other	4	1	3	2	0	1	1	1	2	2	2	19
731 Sprinkler activation due to malfunction	3	3	1	4	3	4	7	4	5	3	4	41
732 Extinguishing system activation due to malfunction	1	2	0	2	1	1	0	1	0	0	1	9
733 Smoke detector activation due to malfunction	12	15	23	23	7	9	8	4	10	9	7	127
734 Heat detector activation due to malfunction	1	0	2	1	0	1	0	0	0	0	0	5
735 Alarm system sounded due to malfunction	6	8	8	10	5	3	7	4	4	5	4	64
736 CO detector activation due to malfunction	1	1	1	0	3	2	1	2	2	7	2	22
740 Unintentional transmission of alarm, Other	1	1	4	7	0	2	3	3	0	2	1	24
741 Sprinkler activation, no fire - unintentional	9	4	7	7	11	12	14	3	11	10	9	97
742 Extinguishing system activation	0	2	1	2	1	0	1	1	0	1	2	11
743 Smoke detector activation, no fire - unintentional	31	38	46	44	39	54	51	37	66	50	46	502
744 Detector activation, no fire - unintentional	7	10	6	8	6	4	5	3	9	4	4	66
745 Alarm system activation, no fire - unintentional	15	20	23	20	31	35	33	31	32	33	39	312
746 Carbon monoxide detector activation, no CO	0	1	1	0	0	5	3	6	6	8	0	30
<b>Subtotal</b>	<b>100</b>	<b>121</b>	<b>144</b>	<b>144</b>	<b>115</b>	<b>139</b>	<b>143</b>	<b>105</b>	<b>159</b>	<b>141</b>	<b>129</b>	<b>1440</b>
<b>8 Severe Weather &amp; Natural Disaster</b>	<b>2005</b>	<b>2006</b>	<b>2007</b>	<b>2008</b>	<b>2009</b>	<b>2010</b>	<b>2011</b>	<b>2012</b>	<b>2013</b>	<b>2014</b>	<b>2015</b>	
800 Severe weather or natural disaster, Other	1	0	0	0	0	0	0	0	0	0	0	1
812 Flood assessment	0	1	5	0	0	3	1	0	0	1	0	11
813 Wind storm, tornado/hurricane assessment	0	1	0	0	0	0	0	0	0	0	0	1
814 Lightning strike (no fire)	1	4	2	4	1	1	0	0	0	0	0	13
815 Severe weather or natural disaster standby	0	0	0	1	0	0	0	0	0	0	0	1
<b>Subtotal</b>	<b>2</b>	<b>6</b>	<b>7</b>	<b>5</b>	<b>1</b>	<b>4</b>	<b>1</b>	<b>0</b>	<b>0</b>	<b>1</b>	<b>0</b>	<b>27</b>
<b>9 Special Incident Type</b>	<b>2005</b>	<b>2006</b>	<b>2007</b>	<b>2008</b>	<b>2009</b>	<b>2010</b>	<b>2011</b>	<b>2012</b>	<b>2013</b>	<b>2014</b>	<b>2015</b>	
900 Special type of incident, Other	1	0	0	1	2	0	1	0	1	0	0	6
911 Citizen complaint	5	3	5	2	7	0	2	0	0	1	1	26
<b>Subtotal</b>	<b>6</b>	<b>3</b>	<b>5</b>	<b>3</b>	<b>9</b>	<b>0</b>	<b>3</b>	<b>0</b>	<b>1</b>	<b>1</b>	<b>1</b>	<b>32</b>
<b>Total # of incidents per year</b>	<b>446</b>	<b>476</b>	<b>482</b>	<b>452</b>	<b>446</b>	<b>491</b>	<b>494</b>	<b>425</b>	<b>493</b>	<b>467</b>	<b>444</b>	<b>5116</b>
<b>Inspection Type</b>	<b>2005</b>	<b>2006</b>	<b>2007</b>	<b>2008</b>	<b>2009</b>	<b>2010</b>	<b>2011</b>	<b>2012</b>	<b>2013</b>	<b>2014</b>	<b>2015</b>	<b>Total</b>
Fire code inspections	1195	561	914	1745	806	1721	2034	2530	1652	1359	1867	16384
Fire alarm system inspections	120	76	16	22	8	15	17	23	18	17	9	341
Sprinkler system inspections	145	91	47	43	35	27	31	43	55	40	30	587
<b>Total # of inspections per year</b>	<b>1460</b>	<b>728</b>	<b>977</b>	<b>1810</b>	<b>849</b>	<b>1763</b>	<b>2082</b>	<b>2596</b>	<b>1725</b>	<b>1416</b>	<b>1906</b>	<b>17312</b>
<b>Public Education Services</b>	<b>2005</b>	<b>2006</b>	<b>2007</b>	<b>2008</b>	<b>2009</b>	<b>2010</b>	<b>2011</b>	<b>2012</b>	<b>2013</b>	<b>2014</b>	<b>2015</b>	<b>Total</b>
# of people given station tours	540	563	414	588	222	364	555	664	464	411	323	5108
# of people given extinguisher demonstrations	351	611	671	393	247	475	428	680	808	647	617	5928
# of people at truck visits	1337	1199	1482	1643	3003	1913	2075	1296	2500	1933	2557	20938
# of people given fire safety information	2404	1774	1861	869	1530	1679	1935	1985	1697	1466	1315	18515
<b>Total # of pub ed services per year</b>	<b>4632</b>	<b>4147</b>	<b>4428</b>	<b>3493</b>	<b>5002</b>	<b>4431</b>	<b>4993</b>	<b>4625</b>	<b>5469</b>	<b>4457</b>	<b>4812</b>	<b>50489</b>

## Owatonna Fire Department Incidents by Jurisdiction - 10 Year Statistics



## Owatonna Fire Department Incident Types - 10 Year Statistics

